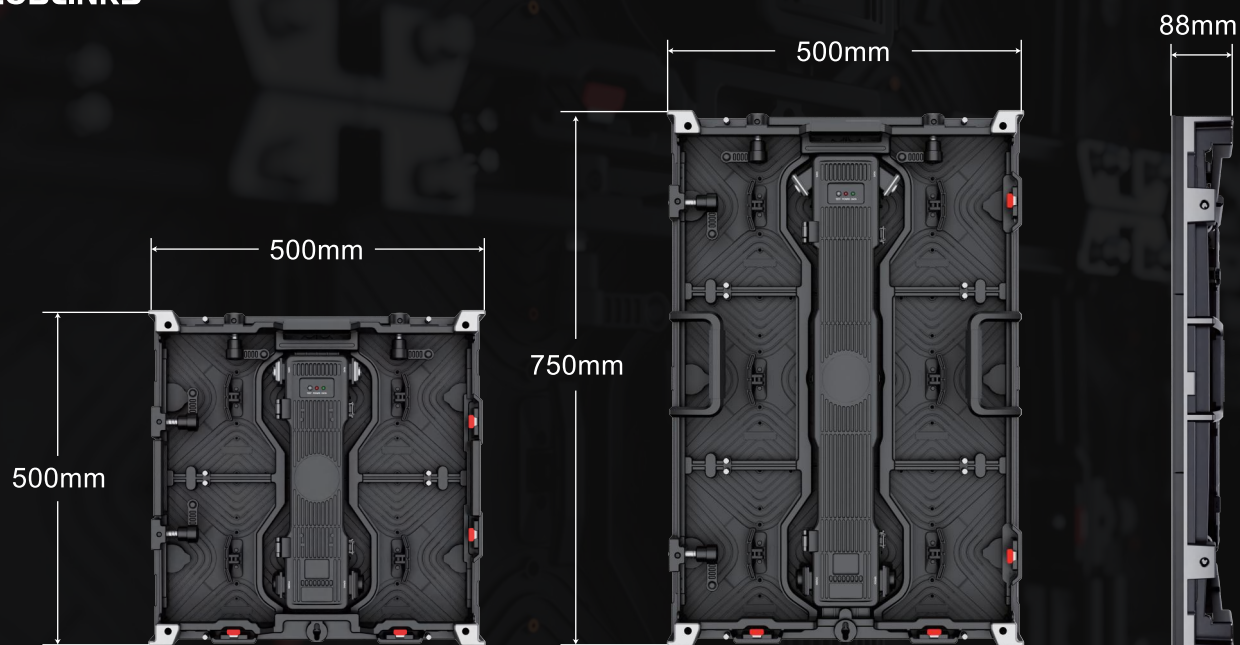


MB series

Three-in-one modular design & outdoor fine pixel pitch



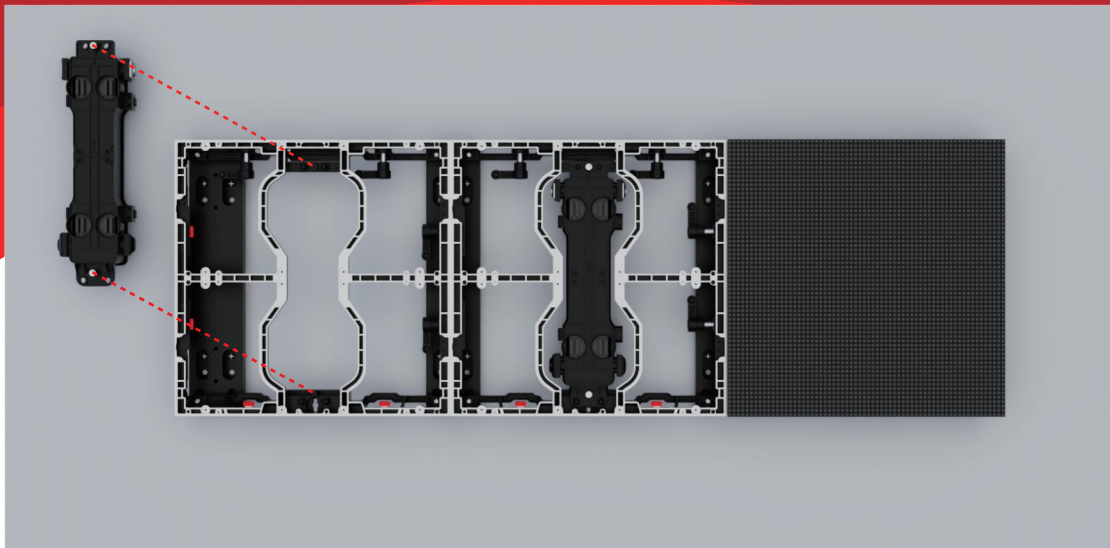
Multi-size design



Modular design

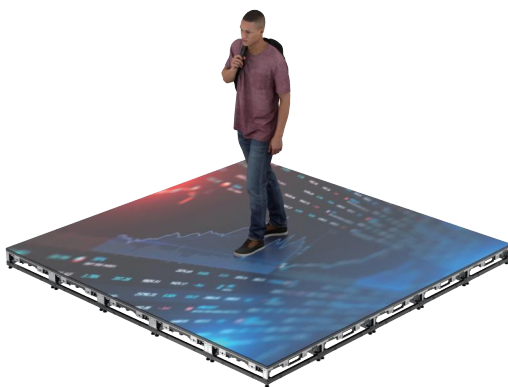
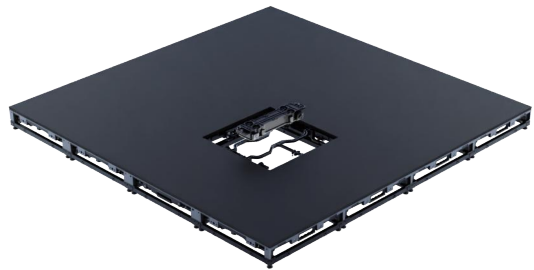
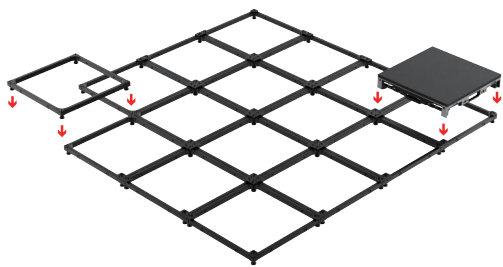
The cabinet is designed with modular design, consisting of modules, cabinets and power box which is very simple and convenient

The cabinet compatible with all indoor/outdoor modules to simplify inventory and reduce costs



Complete front maintenance solution

The modules and power box can all be removed from the front



Creative led floor display design

The cabinet can be used as floor tiles to realize various application scenarios such as stage and virtual shooting. The modules and power control box can be removed from the front



Optional curve & cube-shaped solution

The cabinets are available as an option to create cube-shaped or curve displays



Professional installation frames

The MB series are equipped with hanging beams, floor stacking rack accessories to meet the needs of hanging and stacking, which makes it convenient for customers to use the products according to the needs of the actual application scenarios

Specifications

Indoor

Model	MB1.9	MB2.6	MB2.9	MB3.91	MB4.81	MB5.95
Pixel Pitch (mm)	1.9	2.6	2.9	3.91	4.81	5.95
Physical Density (dot/m²)	262,144	147,456	112,896	65,536	43,264	28,224
LED Type	SMD1515	SMD1515	SMD1515	SMD2020	SMD2020	SMD2020
Module Size (mm)	250x250					
Module Resolution (dots)	128x128	96x96	84x84	64x64	52x52	42x42
Cabinet Size (mm)	500x500x88 / 500x750x88					
Scanning Mode	1/32	1/32	1/28	1/16	1/13	1/7
Cabinet Material	Die-casting Aluminum					
Weight (KG/PCS)	8.5KG / 12.5KG					
Brightness (cd/m²)	1000	1000	1000	1200	1200	1200
Refresh Rate (Hz)	≥3840					
Viewing Angle (H/V)	140°/140°					
Grey Scale (bit)	16					
Input voltage (V)	AC100-AC220					
Avg. Power Consumption (W/m²)	225	240	227	168	170	186
Max. Power Consumption (W/m²)	675	720	680	504	511	558
Maintenance Mode	Front&Rear					
Rotation Angle	0°/±2.5°/±5°/±7.5°/±10°					
IP Grade	IP65					
Working Temperature (℃)	-20~ +50					
Working Humidity (RH)	10%~90%					
Storage Temperature (℃)	-30~ +70					
Storage Humidity Range (RH)	10%~90%					
Life Span (H)	≥100,000					

Outdoor

Model	MB1.25	MB1.56	MB1.893	MB2.604	MB2.976
Pixel Pitch (mm)	1.25	1.56	1.893	2.604	2.976
Physical Density (dot/m²)	640,000	473,344	278,784	147,456	112,896
LED Type	SMD0606	SMD1010	SMD1010	SMD1010	SMD1010
Module Size (mm)	250x250				
Module Resolution (dots)	200x200	162x162	132x132	96x96	84x84
Cabinet Size (mm)	500x500x87 / 500x750x87				
Scanning Mode	1/40	1/32	1/22	1/16	1/14
Cabinet Material	Die-casting Aluminum				
Weight (KG/PCS)	10KG / 14KG				
Brightness (cd/m²)	3000	3500	3500	3500	3500
Refresh Rate (Hz)	≥3840				
Viewing Angle (H/V)	160°/160°				
Grey Scale (bit)	16				
Input Voltage (V)	AC110-AC220				
Avg. Power Consumption (W/m²)	213	213	213	213	213
Max. Power Consumption (W/m²)	640	640	640	640	640
Maintenance Mode	Front&Rear				
Rotation Angle	0°/±2.5°/±5°/±7.5°/±10°				
IP Grade	IP65				
Working Temperature (℃)	-20~ +60				
Working Humidity (RH)	10%~90%				
Storage Temperature (℃)	-30~ +70				
Storage Humidity Range (RH)	10%~90%				
Life Span (H)	≥100,000				

Shenzhen Coblinks Technology Co., Ltd.

Add :Building 6, Xinyongfeng (Henglong) Industrial Park, Shiyan Shuitian 4th Industrial Zone, Bao'an District, Shenzhen

Website : www.coblinks.com Tel : +86 755 8524 2924